

# PRODUCT CATALOGUE



## **IKHLAS DENTAL SDN BHD**

**Formerly known as YC Dental Supplies**

Reg: 1456977-M

1, Jalan Landak Kawan, Century

Garden 80250 Johor Bahru Johor

Malaysia.

Email: [sales@ikhlasdental.com](mailto:sales@ikhlasdental.com)

Contact



+6018-2668355 (Ben)

+6016-7263088 (Will)

+6016-4576740 (Patrick)-Penang



# RESTORATIVE MATERIALS

Ventura Nanolux 4g /sy - A1,A2,A3,A3.5



The universal light-curing nano-hybrid composite that creates excellent, high-quality anterior and posterior restorations.



## Features and Benefits

- Filler content 81%, particles from 0.05 to 0.9 microns.
- Very low water solubility and a great colour stability. Fluoride release.
- Excellent polishing.
- Natural fluorescence.
- Easy to use in posterior and anterior restorations.
- Good fracture toughness, strength and wear resistance.
- Easy to adapt to the cavity.
- Radiopaque.

**RM75**

**Buy 5@RM65 each**

Ventura Similux 4g /sy - A1,A2,A3,A3.5



A light-curing micro-hybrid composite that provides everything required for long-lasting restorations. More than 20 years on the market and on-going demand.



## Features and Benefits

- Filler content 81%, particles from 0.05 to 1.5 microns. Compatible with other adhesive brands.
- Fluoride release.
- Natural fluorescence.
- “Chameleon” effect.
- High compression resistance, ideal for class I and II.
- High resistance to abrasion. Polishable to high sheen. Radiopaque.

**RM75**

**Buy 5@RM65 each**



ISO 9001 : 2008



ISO 13485 : 2012



## Ventura Bulkfill Flow 2g /sy - 12 tips



Flowable, light-curing and radiopaque micro-hybrid composite. Bulkfill material, free from TEGDMA and HEMA.



### Features and Benefits

- Low Shrinkage stress
- Increase curing depth (increment thickness 4mm)
- Ideal working for minimal invasively.

### Specially indicated for:

- It has to coated occlusally with an at least 2mm thick layer of a methacrylate-based universal or lateral tooth composite
- Universal Colour

RM85

Buy 4@RM65 each

## Ventura Flow 3.4g /sy + 12tips- A1,A2,A3,A3.5



A UNIQUE flowable light-curing composite with lower shrinkage stress and volumetric shrinkage than the vast majority of composites.



### Features and Benefits

- Great resistance to abrasion.
- Perfect handling due to its high thixotropy and viscosity. Longer working time under surgical light as it is more resistant to premature polymerization.
- Type III and V restorations. Fissure sealing and lining. Small aesthetic restorations.
- Acrylic reconstructions and luting of ceramic pieces.

RM80

Buy 5@RM70 each



ISO 9001 : 2008



ISO 13485 : 2012



## Ventura Unibond 2 5ml / btl



### Features and Benefits

- It only requires the application of a single layer.
- It allows either wet or dry technique to be used without compromising adhesion or reliability.

### Specially Indicated For

- As it does not evaporate, it maintains a constant fluidity from the first to the last drop in each tube.
- Its gel-type consistency simplifies a precise application of the appropriate thickness based on clinical requirements.

**RM106**  
**Buy 2@**  
**RM85 each**

## Ventura Etching Gel 12ml - 4 x 3ml/sy + 12 tips 26ml - 2 x 10ml/sy + 2 x 3ml/sy + 10 tips



37 % orthophosphoric acid solution.



### Features and Benefits

- Its colour facilitates a perfect control of the process. Gel with ideal viscosity.
- Highly thixotropic.
- Safe and practical dispensing system.
- Very fine bendable needles.

**12ml@RM80**  
**Buy 5@RM58 each**

**26ml@RM110**  
**Buy 5@RM80 each**





# IMPRESSION SILICONES

## Ventura impress 2 Putty Soft regular set / Putty Soft fast set



### Features and Benefits

- High resistance to deformation.
- High tear strength.
- Excellent elastic recovery.

### Properties:

	Putty soft - Regular	Putty soft - Fast
Working time :	2'	1' 15"
Time in the oral cavity :	2' 30"	1' 30"
Setting time :	3'	2'
Shore A hardness :	60	60
Colours :	Yellow	Blue

**OFFER**  
**RM215 PER SET**

### Special Package

Putty Soft + Light body	RM405
Putty Soft + Monophase	RM405
Light body + Monophase	RM425



ISO 9001 : 2008



ISO 13485 : 2012



## Ventura impress 2 – Light Body regular/fast



### Features and Benefits

- Precision in detail reproduction.
- Thixotropic.
- High resistance to deformation.
- Very high tear strength.
- Excellent elastic recovery.
- Extremely hydrophilic.

**OFFER**

**RM220 PER SET**

### Properties:

	Light Body - Regular	Light Body - Fast
Working time :	2' 15"	1' 30"
Time in the oral cavity :	3'	1' 30"
Setting time :	3' 30"	2'
Shore A hardness :	53	48
Colours :	Green	Orange

## Ventura impress 2 – Monophase fast

### Features and Benefits

- Precision in detail reproduction.
- High resistance to deformation.
- Very high tear strength.
- Excellent elastic recovery.
- Extremely hydrophilic.



**OFFER**

**RM230 PER SET**



ISO 9001 : 2008



ISO 13485 : 2012



# Ventura Bite 50ml x 2 + 12 mixing tips



High hardness bite registration for all kinds of occlusion techniques.



- For all kinds of occlusion techniques.
- High thixotropy.
- Easy to polish after hardening.
- Very high hardness after setting.
- Ideal working time for a proper handling.
- Fast setting in the oral cavity for patient comfort.

## Properties:

Working time :	30"
Time in the oral cavity :	45"
Shore A hardness :	93
Colours :	Blue

RM150

## Accessories



- |  |        |
|--|--------|
| • Ventura Dispensing Gun DS 1:1                        | RM 300 |
| • Ventura Mixing Tips Yellow 1:1 - 50u                 | RM 72  |
| • Ventura Mixing Tips Green 1:1 - 50u                  | RM 72  |
| • Ventura Intraoral Tips Yellow - 50u                  | RM 35  |
| • Ventura Flow/Gel Tips - 25u                          | RM 20  |
| • Ventura Brush Blue Fine (Standard Activator) - 100u  | RM 20  |
| • Ventura Brush Orange Regular (Endo Activator) - 100u | RM 20  |



ISO 9001 : 2008



ISO 13485 : 2012



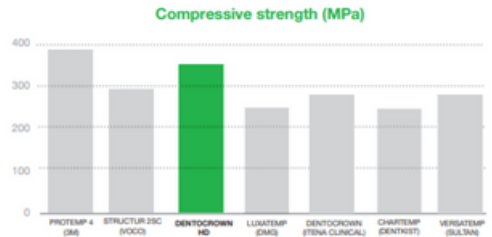
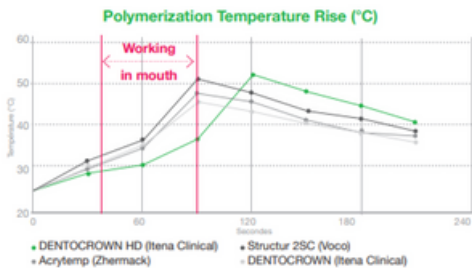
# Dentocrown HD 50ml (76g) + 10 mixing tips - A1,A2,A3

## Self-curing resin for temporary crowns & bridges

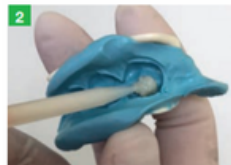


### Features and Benefits

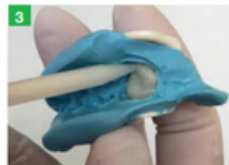
- High compressive and flexural strength. Extremely hard and resistant, absorbent of shocks for fracture prevention.
- Low polymerisation shrinkage. Better marginal adaptation
- Low exothermic polymerisation reaction
- Easy retrieval thanks to its elasticity
- Aesthetic result. High stability of colour and fluorescence natural shine
- Can be used on living teeth



Initial view of the tooth to be treated.



Filling the impression with the material



View in the impression



Temporary tooth



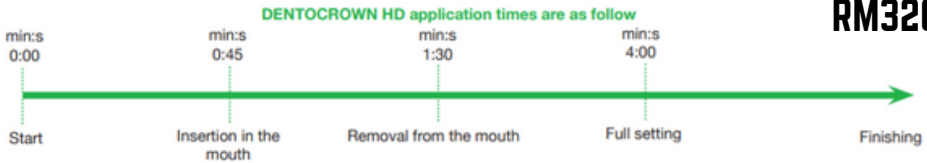
Final result





### Technical data

High compressive strength..... 320 MPa  
 Flexural strength for 10 min..... 40 MPa  
 Working time .....30-50 sec max  
 Setting time ..... 40-70 sec



## RM320

## MTA BIOSEAL 4g + 10 mixing tips + 1 mixing pads

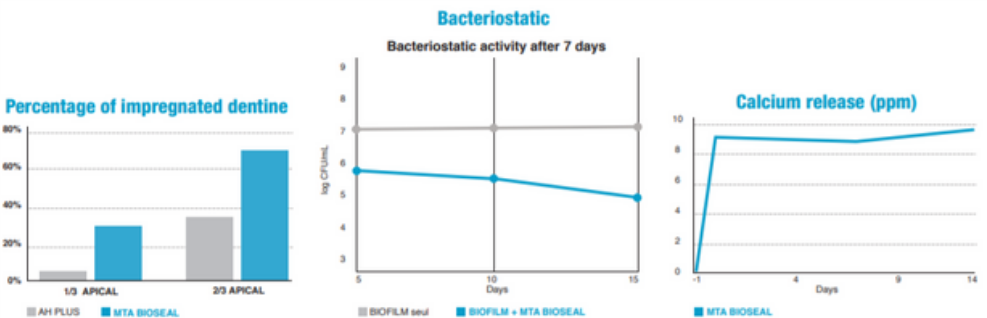
### Endodontic root canal sealer



### Features and Benefits

- Homogeneous penetration of product in tubules
- Prevention of bacteria proliferation
- Perfect sealing Decreased working time
- Easy insertion into the root canals
- Does not discolour teeth

## RM260

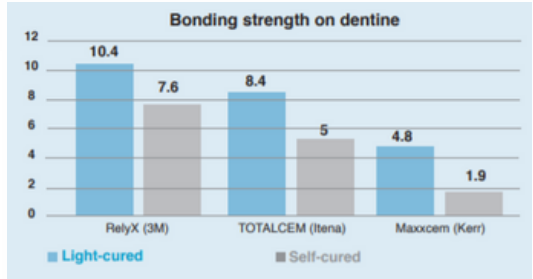




**Total Cem** 8g (5ml)/sy + 10 mixing tips + 10 Intraoral tips - A2 , Translucent

**Self-etching and self-adhesive permanent resin cement**

**Special for metal**



**Features and Benefits**

- All in one: Etching + Bonding + Cement
- Dual cure (Light- or self-cure)
- Optimised gel state for easy removal of excess: simply cure for 3-4s
- Not soluble in oral fluids
- Long term shade stability

**Technical data**

Compressive strength:	180 MPa
Water sorption:	12 µg/mm3
Solubility:	7 µg/mm3
Film thickness:	10 µm
Radiopacity, % Aluminium:	250
Fluor release (cumulative on 14 days):	589 ppm
Working time:	1.5 to 3.5 min
Setting time:	2.5 to 4.5 min
Compatible with all lamps:	Yes

**RM240**

**Total C-Ram** 8g (5ml)/sy + 10 mixing tips + 10 Intraoral tips - Opaque , Translucent

**Self-etching and self-adhesive permanent resin cement**

**Special for ceramics**



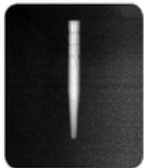
**Features and Benefits**

- All in one: Etching + primer + bonding + cement
- Exceptional bonding strength Dual curing (light- or self-cure)
- Optimised gel state for delete easy excess removal: simply cure 2s
- Recommended for cementation of veneers thanks to the extremely thin fi lm (10 µm)
- Radiopaque 250% Al

**RM240**



# Q.P Fiber Post Plus Kit



• Radiopacity > 330% AI



• Light transmitting

## Features and Benefits

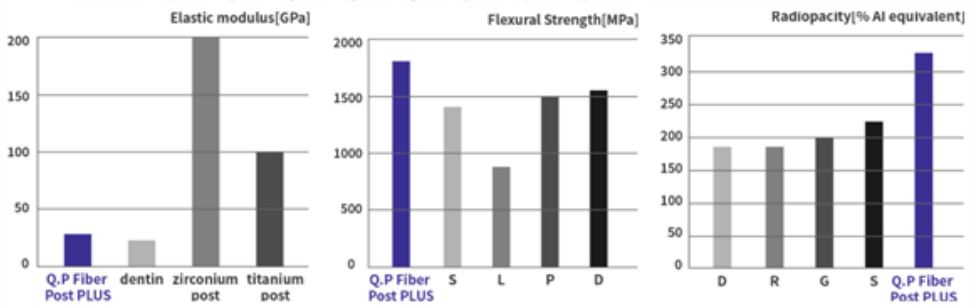
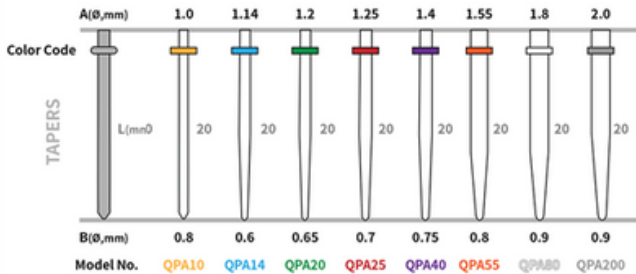
- Good bonding strength caused by SILANE finishing on post surface
- Higher transparency provides superior aesthetics and light transmission, and is advantageous for dual cure cementation
- Being anticorrosive and having passed all biosafety tests, it ensures bioaffinity and safety
- Passed all the tests including cytotoxicity test, ames test, acute system toxicity test and oral mucosal irritation test
- Can be atraumatically removed in minutes
- Tapered apical shape conserves dentin
- Elastic bending strength similar to that of dentin helps to protect teeth without causing root canal fracture
- Enhanced flexural strength (>1,800MPa)
- Optimal Radiopacity (>330% AI equivalent) (ISO4049)

### Kit Options

Kit	Diam	Q.P Fiber Post PLUS	drills	Kit	Diam	Q.P Fiber Post PLUS	drills
QPA1209	ø1.14	10pcs	1pcs	QPA1409	ø1.0	5pcs	1pcs
	ø1.25	10pcs	1pcs		ø1.2	5pcs	1pcs
	ø1.55	10pcs	1pcs		ø1.4	5pcs	1pcs
			ø1.55		5pcs	1pcs	



## Q.P Fiber Post Plus Refill



### Refills Description

No.	QPA10	QPA14	QPA20	QPA25	QPA40	QPA55	QPA80	QPA200
Diam	Ø1.0	Ø1.14	Ø1.20	Ø1.25	Ø1.40	Ø1.55	Ø1.8	Ø2.0
Refill	10pcs	10pcs	10pcs	10pcs	10pcs	10pcs	10pcs	10pcs
Color Code								

**RM140**

## Q.P Fiber Post Drill 1 ea - Size ø1.8 , ø2.0



- Safe drill of reamer shape

**RM120**



## Gutta Percha Points



### Features and Benefits

- Uniformed and non-distorting crimp
- Long shelf life and freshness assured
- Points with mm marking at 16mm, 18mm, 19mm, 20mm, 22mm and 24mm.
- Eliminates apex perforations which may lead to bleeding.

## Gutta Percha

6 Compartments, 120 Points

Assortment Size : 15 - 40 , 45 - 80

Individual Size : 10, 15, 20, 25, 30, 35, 40, 45, 50, 55, 60, 70, 80, 90, 100

**RM21**

**Buy 10@RM16 each**

## Gutta Percha Protaper

6 Compartments, 60 Points

Assortment Size : F1 - F3 , F4 - F5

Individual Size : F1, F2, F3, F4, F5

**RM45**

**Buy 5@RM38 each**

## Gutta Percha Special Taper

6 Compartments, Length Mark, 60 Points

0.04 Taper or 0.06 Taper

Assortment Size : 15 - 40 , 45 - 80

Individual Size : 15, 20, 25, 30, 35, 40, 50, 55, 60

**RM38**

**Buy 10@RM21 each**

## Gutta Percha Acc's Points

6 Compartments, 120 Points

Individual Size : XF, FF, MF, FM, M

**RM38**

**Buy 10@RM21 each**



## Absorbent Paper Points



### Features and Benefits

- Unsurpassed consistency in quality
- Rigid enough to be easily inserted into the moist root canal without curing or bending and be highly absorbent excellent radio-sterilized
- Points with mm marking at 16mm, 18mm, 19mm, 20mm, 22mm and 24mm.

### Paper Point

6 Compartments, Length Mark, 200 Points

Assortment Size : 15 - 40 , 45 - 80

Individual Size : 10, 15, 20, 25, 30, 35, 40, 45, 50, 55, 60, 70, 80, 90, 100, 110, 120, 130, 140

**RM23**

**Buy 10@RM17 each**

### Paper Point Special Taper

6 Compartments, Length Mark, 60 Points

0.04 Taper or 0.06 Taper

Assortment Size : 15 - 40 , 45 - 80

Individual Size : 15, 20, 25, 30, 35, 40

**RM35**

**Buy 10@RM25 each**

### Paper Point Acc's Points

6 Compartments, 200 Points

Individual Size : XF, F, M

**RM35**

**Buy 10@RM25 each**



## When design and function come together, you get Fusion!

The Composit-Tight® 3D Fusion™ sectional matrix system has been engineered to provide the ultimate solution to even the most difficult of Class II challenges. Whether you're restoring an entire quadrant, the distal of the canine, or a completely broken down MOL, Composit-Tight® 3D Fusion™ provides you with the materials to achieve predictable results.

### Tight contacts - guaranteed!

Superior tooth separation force through advanced engineering and material selection guarantees perfect contacts restoration after restoration.

### Ideal anatomy!

Soft-Face™ silicone ring tips with enhanced marginal ridge anatomy hug the pre-contoured dead-soft matrices to the tooth for flash free, perfectly contoured restorations.

### Simplified technique!

Composit-Tight® 3D Fusion™ is packed with features like Tru-Stack™ technology for easy ring stacking, over-the-wedge placement and Ultra-Grip™ anti-ring slip extensions that make system use intuitive and frustration free.

## Composit-Tight 3D Fusion - Complete Kit



### FX-KFF-11

#### Extra:

- 1 Short Ring (Blue)
- 1 Tall Ring (Orange)
- 1 Wide Prep Ring (Green)
- 70 Assorted 3D Fusion Matrix Bands (FX100-20, FX150-5, FX175-20, FX200-20, FX300-5)
- 80 Assorted Ultra-Adaptive Wedges
- 1 New 3D Fusion Ring replacement Forceps
- 12 Fender Wedges
- 1 Matrix Forceps
- 1 Nonstick titanium-nitride coated



**FREE 2 packs  
of FX bands  
RM 3,899**

**OFFER**



## Composi-Tight 3D Fusion - Introductory Kit



### FX-KFF-40

#### Extra:

- 1 Short Ring (Blue)
- 1 Tall Ring (Orange)
- 1 Wide Prep Ring (Green)
- 40 Assorted 3D Fusion Matrix Bands (FX100-10, FX150-5, FX175-10, FX200-10, FX300-5)
- 40 Assorted Ultra-Adaptive Wedges
- 1 New 3D Fusion Ring Placement Forceps

**FREE 2 packs  
of FX bands**

**RM 2,787**

**OFFER**

---

## Composi-Tight 3D Fusion - Starter Kit



### Features and Benefits

- Great seal
- No spring-off
- Adapts to tooth
- Fully autoclavable
- Faster finishing
- Separates teeth

### FX-KFF-35

#### Extra:

- 1 Composi-Tight® 3D Fusion™ Premolar Ring
- 25 Bands ~ 3D Fusion Matrix Band non-stick matrices (5ed; FX100, FX150, FX175, FX200, FX300)
- 40 Wedges ~ 3D Fusion Wedges (10ed of the sizes)
- 1 New 3D Fusion Ring Placement Forceps

**RM 1,250**

**OFFER**

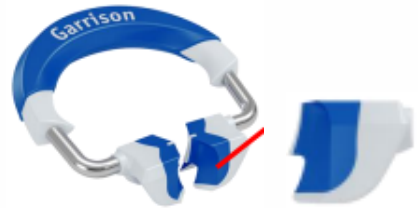




## Composi-Tight 3D Fusion Short Ring

### Features and Benefits

- **Hugs the curves** – Soft-Face™ silicone tips with enhanced marginal ridge anatomy hug the matrix band to the tooth for flash free restorations
- **Get a grip** – All Composi-Tight® 3D Fusion™ separator rings incorporate Ultra-Grip™ retention extensions that anchor them securely to virtually any tooth. Fusion rings stay where you place them!

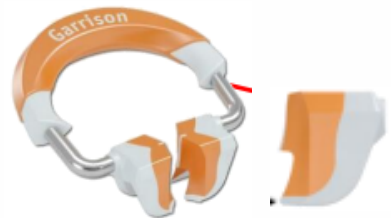


**RM 630 PER RING**  
**OFFER 2 RINGS @ RM1,200**

## Composi-Tight 3D Fusion Tall Ring

### Features and Benefits

- **It just keeps going** – Enhanced durability for extended ring life and greater tooth separation
- **Get a grip** – All Composi-Tight® 3D Fusion™ separator rings incorporate Ultra-Grip™ retention extensions that anchor them securely to virtually any tooth. Fusion rings stay where you place them!



**RM 630 PER RING**  
**OFFER 2 RINGS @ RM1,200**

## Composi-Tight 3D Fusion Wide Ring

- **World first wide prep ring** – The prep extends beyond the interproximal area
- **Get a grip** – All Composi-Tight® 3D Fusion™ separator rings incorporate Ultra-Grip™ retention extensions that anchor them securely to virtually any tooth. Fusion rings stay where you place them!



**RM 630 PER RING**  
**OFFER 2 RINGS @ RM1,200**



## Composi-Tight 3D Fusion Full Curve Matrix Bands



**FX100-M**  
4.4mm  
(50pcs)



**FX150-M**  
5.0mm  
(30pcs)



**FX175-M**  
5.6mm  
(50pcs)



**FX200-M**  
6.6mm  
(50pcs)



**FX300-M**  
8.7mm  
(30pcs)

(Significantly Easier Band Removal)

**RM 476 PER REFILL**

**BUY 1 @ 10% OFF**

**BUY 3 @ 15% OFF**

## Composi-Tight 3D Fusion Slick Bands XR



**SM100-M**  
50/pack



**SXR150-M**  
30/pack



**SXR175-M**  
50/pack



**SXR200-M**  
50/pack



**SXR300-M**  
30/pack

**RM 428 PER REFILL**

**BUY 1 @ 10% OFF**

**BUY 3 @ 15% OFF**

## Composi-Tight Gold Sectional Matrix Bands



**AU100-M**  
50/pack



**AU150-M**  
25/pack



**M175-M**  
50/pack



**AU200-M**  
50/pack



**AU300-M**  
25/pack

**RM 308 PER REFILL**

**BUY 1 @ 10% OFF**

**BUY 3 @ 15% OFF**



## Composi-Tight Matrix Forceps

### Features and Benefits

#### BFA-1

- **Precise Placement** - the tips have a 75-degree angle with an occlusal-gingival orientation, providing a more appropriate placement angle than cotton forceps. The petite, carbide tips allow the matrix to be grasped at its upper edge to prevent distortion of the interproximal area of the band.
- **Unbeatable Grip** - the tungsten carbide tips provide exceptional grip and tactile control for tough access cases.



**OFFER**  
**RM 699**

## Composi-Tight 3D Fusion Tall Ring

### Features and Benefits

#### FXP-01

- **Composi-Tight® 3D Fusion™** includes dentistry's premier heavy-duty stainless steel ring placement forceps.
- **Regardless of your hand size or strength**, Composi-Tight® 3D Fusion™ forceps will give you incredible control for the precise placement of super strong separator rings over even the widest molars.
- Work with virtually any ring from any manufacturer.



**OFFER**  
**RM 499**

## SlickBands™ Tofflemire-Style Matrices

### Margin Elevation Band

#### SMT500H10-M

- The deep margin elevation technique is useful non-surgical approach to treating deep localized margins
- A margin elevation matrix will give you the best gingival adaptation and contour for the deep margin areas. It is trimmed in height to allow improved adaptation to deep margin areas.



**OFFER**  
**RM 243**



## Composi-Tight® 3D Fusion™ Interproximal Wedge Refills

3D Fusion Wedges fuse two materials together to produce the perfect combination of adaptability & retention.

**A real softie** 3D Fusion's Soft-Face over-mold allows the wedge to do what no other wedge can truly do - actually adapt to interproximal irregularities.



**Tough on the inside**  
The firm inner skeleton allows for easy insertion and tooth separation just like a traditional wedge.



**BUY 3  
+1 FREE**



### Features and Benefits

- **Superior Adaptability** – Only Composi-Tight® 3D Fusion™ wedges have Soft-Face™ technology. A soft, rubberized material is fused to the firm plastic core. The wedge gently molds itself to root irregularities as you insert it providing an unsurpassed seal.
- **Forget Back-Out** – Soft retentive fins along the gingival edges fold in smoothly during wedge insertion. These spring back when clear of the interproximal space - firmly locking Composi-Tight® 3D Fusion™ in place.
- **Perfect for any matrix** – Regardless of your preferred matrix system, these ultra-adaptive wedges will help you produce your best, most predictable restorations ever.

- **FXYL** yellow/extra small  
100 per pack
- **FXBL** blue/small  
100 per pack
- **FXOR** orange/medium  
100 per pack
- **FXGR** green/large  
100 per pack

**OFFER  
RM 320**

## G-Wedge™ Interproximal Wedge Refills



Great anatomy



Refills

- **GSWYL** yellow/extra small  
100 per pack
- **GSWBL** blue/small  
100 per pack
- **GSWOR** orange/medium  
100 per pack

### Features and Benefits

- If you prefer traditional wedge placement with either a hemostat or cotton pliers, G-Wedge™ gives you the same basic wedge shape as the Wedge Wands® without the applicator wand.

**OFFER  
RM 230**



## Wedge Wands® Refills



### Features and Benefits

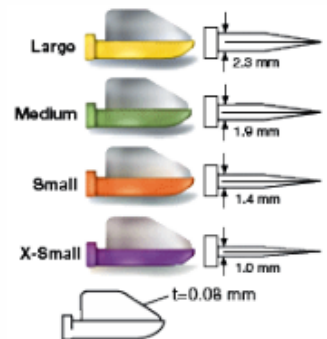
- **Adaptable and anatomical plastic wedges.** Wedge Wands are designed to twist off the wand but many prefer to leave it attached to help retract the cheek and for easy removal after the procedure is completed.

#### Refills

- **SWYL** yellow/extra small  
100 per pack
- **SWBL** blue/small  
100 per pack
- **SWOR** orange/medium  
100 per pack

**OFFER**  
**RM 270**

## FenderWedge® Interproximal Tooth Shield Refills



### Features and Benefits

- Conservative Class II preps are great for saving tooth structure, but can make the placement of your Composi-Tight® sectional matrix bands difficult. FenderWedge® will lend you a hand by "pre-separating" the teeth while you prepare the tooth. When the prep is done, remove FenderWedge® and slide your Composi-Tight® band into place.
- As a fantastic added bonus, the firm stainless steel shield protects the adjacent tooth from inadvertent contact with the bur. Again, protecting valuable natural tooth structure while saving you the hassle of having to polish out nicks.

**OFFER**  
**RM 276**



## Blue View™ VariStrip™ Anterior Matrices



### Features and Benefits

- The Blue View™ VariStrip™ is a revolutionary contoured anterior matrix that provides the optimum curvature and band height for virtually every anterior restoration. The 0.0020" thin plastic anatomical strip is tapered from one end to the other. You can place the strip interproximally and then slide it until the tooth height is perfectly matched. The pre-contouring easily recreates the occluso-gingival anatomy, avoiding flat embrasures.
- **Curved form**—provides the optimum curvature and band height for virtually every anterior restoration.
- **Blue tint**—provides contrast between matrix and tooth structure without compromising composite polymerization.

**OFFER**

VS01 (100 pcs) **RM 579**

VS02 (50 pcs) **RM 322**



## ReelMatrix™ Kit with Margin Elevation Bands



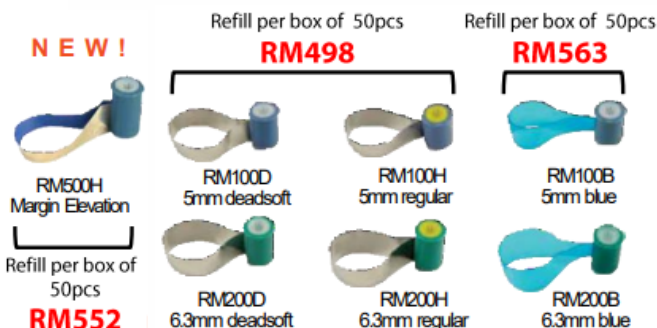
Margin elevatin band is .002" thin.

Super-thin dead-soft bands (**white hubs**) are .0012" thin.

Regular bands (**yellow hubs**) are .0015" thin and can be placed through existing contacts.

A **Blue View** cure-through option at .0029" thin is available if you prefer trans-enamel curing.

**NEW!**



**10% OFF**

Kit	Description
RMK05	Kit Contains 80 matrices (20 RM500H, 10 ea. RM100D, RM200D, RM100H, RM200H, RM100B, RM200B) 1 tensioning instrument 1 PerForm™ instruments (set of 2)

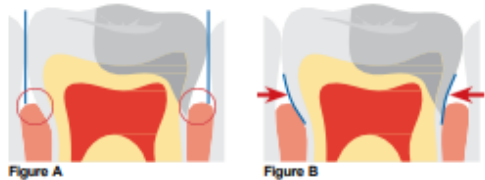
**SALE • RM2755**



**Garrison**  
Dental Solutions

Margin Elevation Band restores deep caries without the trauma.

Margin elevation requires a matrix that will properly adapt and isolate the subgingival area. This is not possible with traditional matrix materials (Figure A). The narrow Margin Elevation Band, with its enhanced conical design, is able to slide down subgingivally and properly seal this area (Figure B).





## Rally<sup>®</sup> Mini Polishers for Composite

### Rally™ gets you to the finish line faster!

The composite finish line that is. With zero reprocessing and sterilization hassles and a lustrous diamond final gloss, Rally™ single patient mini-polishers get you across the finish line and on to your next patient.



**Remove—  
Choose the Blue**  
(silicon carbide)  
Polishers for fast  
removal and  
contouring

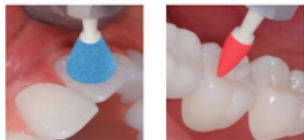


**Smooth—  
Choose the Red**  
(aluminium oxide)  
Polishers for  
smoothing and  
silky shine



**Shine—  
Choose the Gray**  
(diamond)  
Polishers for ultra  
high shine

**Mini, but mighty!** Rally's small size and tapered shaft create a truly agile polisher capable of reaching the smallest anatomical features without blocking your visibility.



FPCK01-X  
(24PCS PACK)

**OFFER • RM250**



**1** Start by gross adjusting and contouring using the blue coarse-grit grinders. Use the flat end taper for occlusal/labial/lingual/buccal surfaces and the disc for interproximal surfaces.



**2** Use the green medium-grit polishers for smoothing and pre-polishing. Use the point for the occlusal grooves, the cup for labial/lingual/buccal, and the disc for interproximal surfaces.



**3** Use the orange fine-grit polishers for high gloss polishing. Use the point for the occlusal grooves, the cup for labial/lingual/buccal, and the disc for interproximal surfaces.

**eZr<sup>®</sup>**  
Intra-oral Adjustment/Polishing  
for Zirconia and Lithium Disilicate



FPZK01-X  
(2 grinders, 6 polishers)  
**OFFER • RM1022**

- Enables easy and safe adjustment for zirconia and lithium disilicate.
- Proprietary diamond impregnated polisher reduces possibility of chipping and microfracturing.
- Provides an unparalleled smoothly polished occlusal surface, eliminating abrasiveness to opposing dentition.
- Prevents over-heating that could lead to premature failure.
- Eliminates the need for polishing paste, reducing overall cost per procedure.





## Composite Instruments - Nonstick titanium-nitride coated

Nonstick titanium-nitride coated



**Arcon Carver**  
for accurate occlusal contours.  
**Two Sizes of Condensers**  
specially-shaped to double as contact formers.

**TN009 OFFER - RM499**



**Unique 5-in-1 design**

**Blade.** Longer blade for applying and shaping composite not too thick or thin!  
**Acorn carver** for accurate occlusal contours.



**Two Sizes of Condensers**  
specially-shaped to double as contact formers.  
**Ball burnisher** for smoothing and spreading composite.

**TN008 OFFER - RM499**



**TN001-TN003 OFFER - RM217**

### TN001 Medium Blades

• Placement of composite material • Gingival retraction to sculpt under free margins • Burnishing matrix bands

### TN002 Medium Blade with Medium Plugger

• Contouring small Class I, II, V • Packing composite material into conservative preparations • Burnishing matrix bands

### TN003 Medium Blade with Large Plugger

• Contouring small Class I, II, V • Packing composite material into large preparations • Convex plugger tip minimizes pullback of composite material

**TN001**



**TN002**



**TN003**





## Composite Instruments - Nonstick titanium-nitride coated

### TN004 Extra Thin Blades

- Reach under margins to hone and sculpt • Sculpting interproximally
- Packing cord in gingival crevice

### TN005 Long Extra Thin Blades

- Allows additional access for hard-to-reach posterior contouring and shaping • Sculpting interproximally • Packing cord in gingival crevice

TN004-TN005

**OFFER • RM229**



TN006 **OFFER • RM350**

### TN006 Small/Medium Multi-Funtion Plugger

- Placement of composite material in smaller Class II and III • Packing material toward gingival seats • Carving occlusal anatomy with acorn carver



**Garrison**  
Dental Solutions



### "Bob's" Double Cord Packer Instrument

*"With both blades on one end, all I have to do is twist it and keep going."* Dr. Robert "Bob" Margeas

A simple twist of the instrument allows you to maneuver around the tooth without ever leaving your field of view. It's absolutely perfect for use with loupes and microscopes. Keeping the instrument in the mouth lessens the likelihood of injuring the patient versus flipping it. Not to mention it's faster too! It's all possible because the combined blade length has been kept as short as possible

Narrow blades do not injure the sulcus while packing cord around small teeth and irregularities. Thin blades (serrated end) and ultra-thin blades (non-serrated end) slide along firm and healthy sulcus with less trauma. The large diameter lightweight handle's improved ergonomics reduce hand fatigue and give you better tactile control.



**BUY 1 at RM199**  
**BUY 2 at RM340**





# EDGEENDO<sup>®</sup>

*Twice as Good. Half the Cost.*

## Performance. Price. Technology

We believe premium technology shouldn't have to come with a premium price tag.



**INCREDIBLE STRENGTH**



**UNMATCHED FLEXIBILITY**



**NO BOUNCE BACK**



**COMPATIBLE**



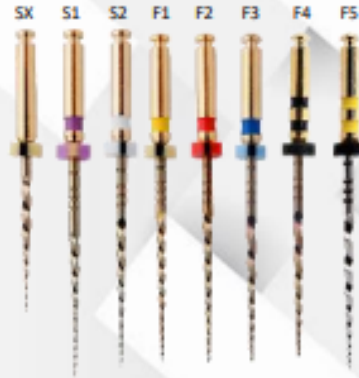


# Edge Taper & Edge Taper Platinum

The Taper Has Been Edge-ified



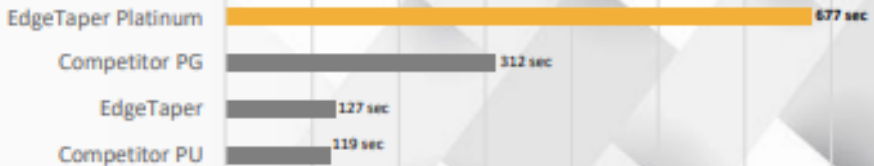
**EDGETAPER™**  
Non Heat-treated  
for Traditional Taper Feel.



**EDGETAPER PLATINUM™**  
Heat-treated Firewire™ NiTi  
for Strength & Flexibility.

## CYCLIC FATIGUE TEST

Average Time to Failure in Seconds.



- The **EdgeTaper Platinum™** and the **EdgeTaper™** are to be used in the same way, using the same technique and ProTaper and ProTaper Gold. This familiar sequence will ensure the switch to **EdgeTaper Platinum™** or **EdgeTaper™** will be seamless.
- **EdgeTaper™** is not heat treated making it more like ProTaper®, files are strong with memory. **EdgeTaper Platinum™** features our Heat-Treated Firewire™ NiTi making it strong and more flexible with 90° curves. EdgeTaper Platinum™ tests at twice the cyclic fatigue as ProTaper Gold® and 6 times the cyclic fatigue as ProTaper®.
- Both file systems have a bloated triangular cross section with a progressive changing taper. Available in lengths 21mm, 25mm, 31mm with six of the same size file in each pack. Experience the new standard in file safety and canal centering ability.



Cross Section  
Convex Triangular

- S1 PURPLE
- S2 WHITE
- F1 YELLOW
- F2 RED
- F3 BLUE
- F4 BLACK
- F5 YELLOW

- SX (tip size 19)**
- S1 (tip size 17)**
- S2 (tip size 20)**
- F1 (tip size 20)**
- F2 (tip size 25)**
- F3 (tip size 30)**
- F4 (tip size 40)**
- F5 (tip size 50)**
- Assorted Pack**



EDGEENDO®

**A PACK OF 6 FILES**

**RM 250 PER PACK**

**BUY 5 PACK @ RM 185 EA**

**BUY 6 & ABOVE @ RM 175 EA**



**EDGEONE**  
FIRE™

Heat-Treated FireWire™ NiTi  
(WaveOne® Gold Users)



### EdgeOne Fire™ GlidePath

EdgeOne Fire™ GlidePath features our Heat Treated FireWire® NiTi and is used with our EdgeOne Fire™ system. EdgeOne Fire™ GlidePath is designed to shape the canal in reverse-reciprocating motion with a parallelogram cross-section and a tip size of 19 that starts at .02 taper and gradually increases to .06 taper over 16 mm. Available in lengths 21mm, 25mm, and 31mm with three same size files in each pack.

### EdgeOne Strength

Cyclic Fatigue Testing – Average Time to Failure in Seconds

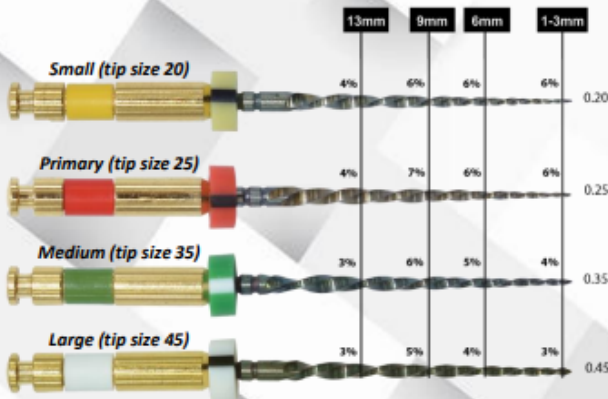
EdgeOne Fire™

Competitor W

**2,844**  
EdgeOne Fire™

**486**  
Competitor W

EdgeOne Fire™ is designed with a varied taper and shapes canals in reverse-reciprocating motion.



**EDGEONE**  
FIRE™

SMALL ■ YELLOW  
PRIMARY ■ RED  
MEDIUM ■ GREEN  
LARGE ■ WHITE

**A pack of 3 files**

**RM 250 PER PACK**

**BUY 5 PACK @ RM 185 EA**

**BUY 6 & ABOVE @ RM 175 EA**

**Cross Section**  
Rhombus



**EDGEENDO**

- EdgeOne Fire™ features our Heat-Treated Fire-Wire™ NiTi and is designed to shape canals in a reverse-reciprocating motion. EdgeOne Fire works with existing handpieces operated at the WaveOne® Gold parameter. EdgeOne Fire tests at twice the cyclic fatigue as WaveOne® Gold.
- EdgeOne Fire™ is available in sizes Small, Primary, Medium, and Large. Files have a parallelogram shaped cross section with a variable taper. There are three files in each pack with the option of an assortment pack or single sized pack. Available in lengths 21mm, 25mm and 31mm.



## Doing the work of 8 instruments.

The **EdgeGlidePath™** heat treated FireWire NiTi file features the legendary flexibility and strength that EdgeEndo is known for, replacing as many as 8 instruments to create a glidepath faster, with far less effort and with a 1mm maximum flute diameter.

- Use exactly like Tulsa Dental ProGlider.
- ¼ cost of Tulsa Dental ProGlider.
- Replaces #15, 20, 35, 30, 35 hand files in a step-back technique and a #1, 2 & 3 Gates Glidden.
- Heat Treated



Cross Section  
Convex Triangular

## EDGEGLIDEPATH™



### EdgeGlidePath™

Heat-Treated FireWire™ NiTi / 4pk

- 21mm  white
- 25mm  white

## EDGEFILE®X7

Heat-Treated FireWire™ NiTi  
(Universal)



### COMPATIBLE

EdgeFile® is fully compatible with your current system meaning a seamless transition.



17 20 25 30 35 40 45

Works with the system you already use.

- Leading file used by Endodontists
- Top selling system in the US and Canada
- Universal files system
- Comes in .04 and .06 taper: 17-45 tip size
- Available in lengths 21mm, 25mm and 29mm
- Parabolic cross section
- Holds tip and taper size at 1 mm then it zeros out
- 6 per pack of the same size



Cross Section  
Parabolic

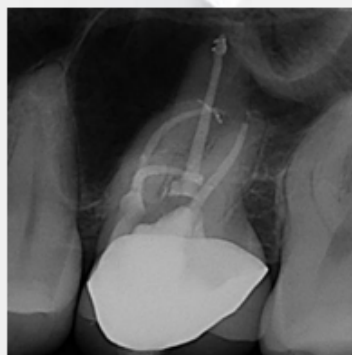
17.04	<input type="checkbox"/>	WHITE
17.06	<input type="checkbox"/>	WHITE
20.04	<input type="checkbox"/>	YELLOW
20.06	<input type="checkbox"/>	YELLOW
25.04	<input type="checkbox"/>	RED
25.06	<input type="checkbox"/>	RED
30.04	<input type="checkbox"/>	BLUE
30.06	<input type="checkbox"/>	BLUE
35.04	<input type="checkbox"/>	GREEN
35.06	<input type="checkbox"/>	GREEN
40.04	<input type="checkbox"/>	BLACK
40.06	<input type="checkbox"/>	BLACK
45.04	<input type="checkbox"/>	WHITE
45.06	<input type="checkbox"/>	WHITE

### A pack of 6 files

RM 250 PER PACK

BUY 5 PACK @ RM 185 EA

BUY 6 & ABOVE @ RM 175 EA



## Heat-Treated Firewire™ NiTi Rotary Files

"I love these files. They are **super flexible and almost indestructible**. They give me the confidence to tackle any beast of a case. **A fraction of the price of my old files and do double the work.** You definitely get more than you pay for!"

-Dr. Yanina Figueroa, DMD, Atlanta GA





## EDGESEQUEL SAPPHIRE™



Cross Section  
Triangular

Bodybuilder Strength. Gymnast Flexibility.



EdgeSequel Sapphire™ is used exactly like Vortex®, Vortex Blue®, and EndoSequence®. EdgeSequel Sapphire™ tests at twice the cyclic fatigue as Vortex® Blue and eight times the cyclic fatigue as Vortex® and EndoSequence®.

EdgeSequel Sapphire™ has a triangular cross section with an open flute design and is a constant taper up to the cutting flutes (cutting flute length is 15 mm). Comes in .04 15-90 and .06 15-50 taper sizes and tips. Available in lengths 21mm, 25mm and 31mm with four same size files in each pack. EdgeSequel Sapphire will help elevate your technique and practice.

04 Taper (15-90 tip sizes)  
06 Taper (15-50 tip sizes)

21mm Size Available  
15.04  
20.04  
20.06  
40.04

25mm Size Available  
35.04  
50.04  
60.04

**A pack of 4 files**  
**RM 250 PER PACK**  
**BUY 5 PACK @ RM 185 EA**  
**BUY 6 & ABOVE @ RM 175 EA**

## FireWire™ NiTi Strength

CYCLIC FATIGUE TEST – AVERAGE TIME TO FAILURE IN SECONDS\*

EdgeSequel Sapphire®

Competitor VB

Competitor ES

633

EdgeSequel Sapphire®

299.9

Competitor VB

80.9

Competitor ES

## EDGEFILE®XR



R1 R2 R3 R4

The XR series is specially designed for retreatment and is non-heat-treated file.

The EdgeGlidePath® XR is a noncutting tip file that uses EdgeEndo® "FireWire™ NiTi – a heat treated nickel-titanium alloy with cryogenic applications that allows maximum flexibility and strength which EdgeEndo® is known for without "screw-in" and or "picking".

These files are used in Endodontics for retreating endodontically treated teeth by the removal of root canal filling, dentin, and root canal shaping. They can be used in the same hand piece as other NiTi rotary instruments. Operate rotary files at 300-500 rpm (revolutions per minute). All files have a constant tapered.

R1 - Size 25.12, 15mm

R2 - Size 25.08, 15mm

R3 - Size 25.06, 19mm

R4 - Size 25.04, 23mm

**A pack of 4 files**  
**RM 250 PER PACK**



Cross Section  
Parabolic

